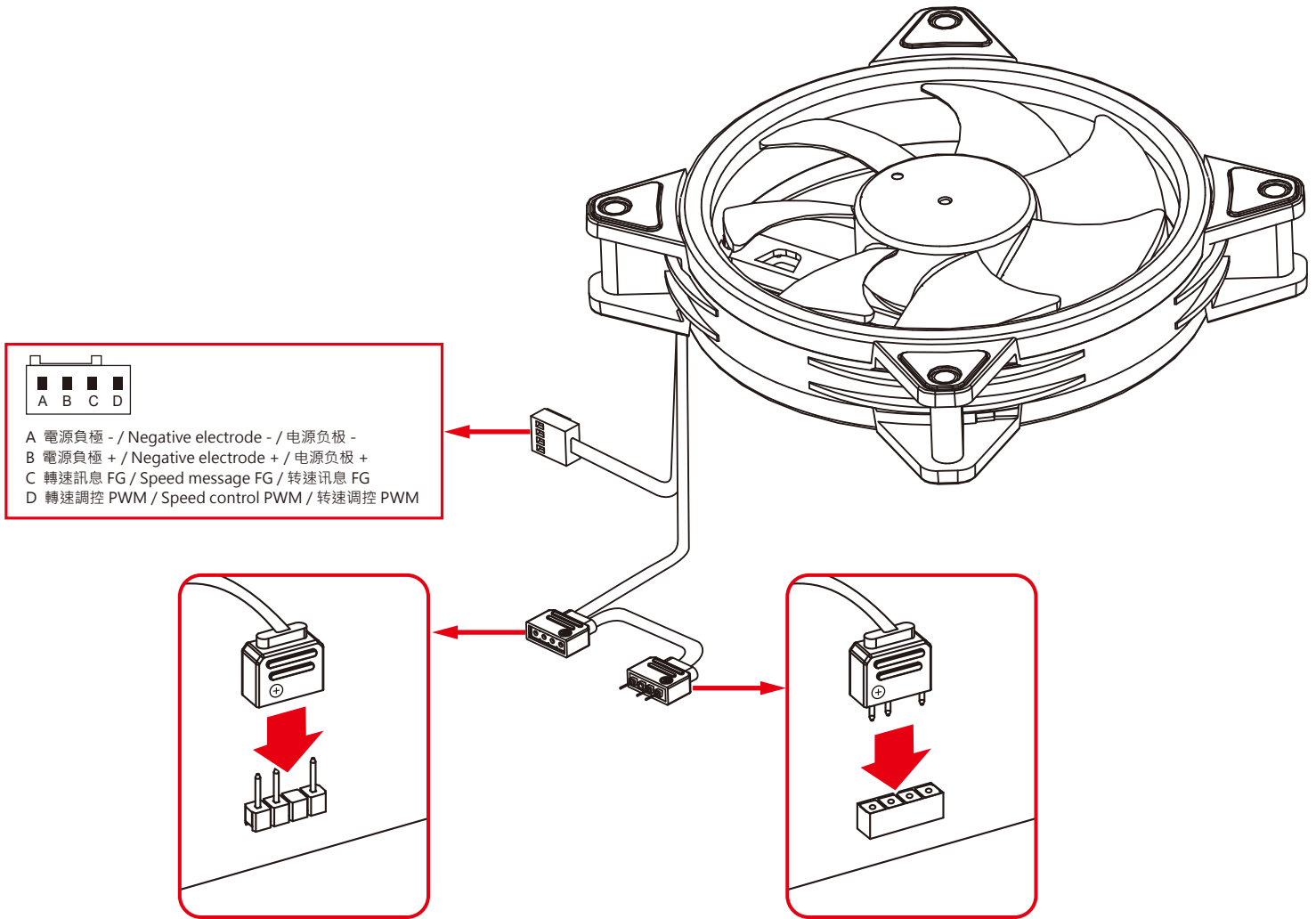


◀ 安裝方式/Installation/安装方式



Specification	
Measurement	120x120x25mm
Rated Voltage	Fan:DC 12V / LED:DC 5V
Operation Voltage	7V~13.2V
Starting Voltage	≤7V
Rated Current	Fan:0.16~0.17A(MAX) / LED:0.9~1.1A(MAX)
Power Consumption	Fan:1.92~2.04W(MAX) / LED:2.0~2.3W(MAX)
Fan Speed	800~1800RPM±10%
Max Airflow	45~50CFM(Max)
Air Pressure	1.3~1.6mmH2O(Max)
Noise Level	25~28dBA(Max)
Life time	30000 Hours
No. of Blades	7
Bearing Type	Hydro Bearing
Power Connector	PWM 4pin header / DRGB 5V 3pin header

風扇規格	
尺寸	120x120x25mm
額定電壓	Fan:DC 12V / LED:DC 5V
工作電壓	7V~13.2V
啟動電壓	≤7V
額定電流	Fan:0.16~0.17A(MAX) / LED:0.9~1.1A(MAX)
功率消耗	Fan:1.92~2.04W(MAX) / LED:2.0~2.3W(MAX)
轉速	800~1800RPM±10%
風量	45~50CFM(Max)
風壓	1.3~1.6mmH2O(Max)
噪音	25~28dBA(Max)
壽命	30000 Hours
葉片數	7
軸承	Hydro Bearing
連接器	PWM 4pin header / DRGB 5V 3pin header

風扇規格	
尺寸	120x120x25mm
額定電壓	Fan:DC 12V / LED:DC 5V
工作電壓	7V~13.2V
启动电压	≤7V
額定電流	Fan:0.16~0.17A(MAX) / LED:0.9~1.1A(MAX)
功率消耗	Fan:1.92~2.04W(MAX) / LED:2.0~2.3W(MAX)
轉速	800~1800RPM±10%
風量	45~50CFM(Max)
風壓	1.3~1.6mmH2O(Max)
噪音	25~28dBA(Max)
壽命	30000 Hours
叶片数	7
轴承	Hydro Bearing
连接器	PWM 4pin header / DRGB 5V 3pin header



注意·跑水前·請先確認所有零件已安裝在正確的位置上·在不開主機·單開水泵的情況下·進行24小時的跑水測試·確保無漏水情況後再開主機·避免發生漏水而導致電腦零件的損壞。
 Before filling in the water, please make sure all the components are installed correctly. To prevent any leakage which may damage the PC components, please perform a 24-hour leaking test with only the pump connected to the power supply.

注意·跑水前·請先确认所有零件已安装在正确的位置上·在不开主机·单开水泵的情况下·进行24小时的跑水测试·确保无漏水情况后开主机·避免发生漏水而导致电脑零件的损坏。

本公司保留對產品的設計更改以及解釋的權力·如有更動恕不另行通知·產品顏色與配件以實物為準。

Bitpower reserves the right to change the product design and interpretations. These are subject to change without notice. Product colors and accessories are based on the actual product.

本公司保留对产品的的设计更改以及解释的权力·如有更动恕不另行通知·产品颜色与配件以实物为准。